



## BOMBARDIER CHALLENGER 604: N605AM

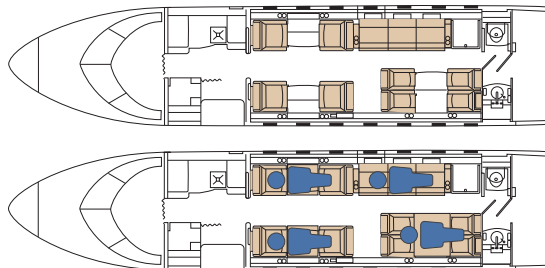
Power & Performance - Elegance & Luxury

The Challenger 604 is one of Bombardier's most preeminent aircraft. Delivering superior strength, versatility, and reliability, this powerful jet combines range and speed with sophistication and style.

Offering the widest cabin of any true business jet available today and stand-up room of over six feet, this Challenger 604 offers spacious seating for up to twelve passengers, a full galley, and a cabin accessible luggage compartment. With a maximum cruise speed of Mach 0.82 and an intercontinental range of over 4,000 nautical miles, the Bombardier Challenger 604 is well suited for any mission.

Comfort, Performance, No Compromises.

<b>Year Manufactured</b>	2005
<b>Year of Interior</b>	2020
<b>Capacity</b>	12 guests
<b>Beds / Sleeps</b>	4 / 4
<b>Range</b>	4,157 sm
<b>Wi-Fi</b>	Domestic



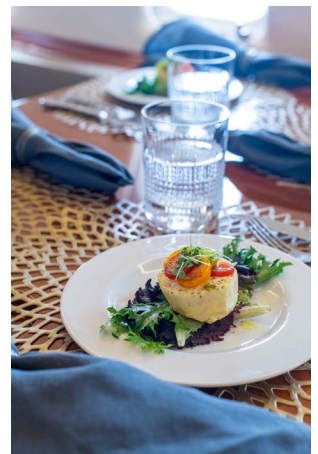
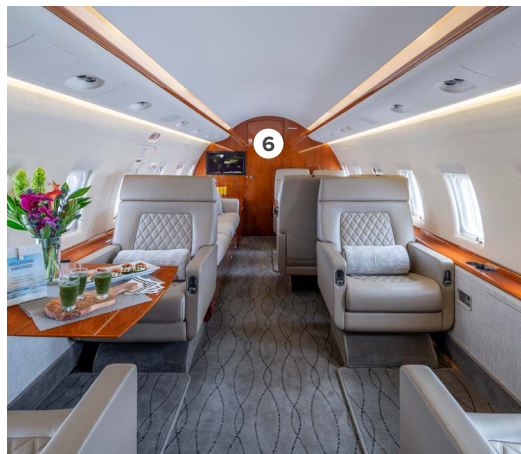
The cabin is berthable and includes bedding for both forward and aft seating areas.



## Interior Appointments, N605AM

- ① A beautiful refreshment center featuring hand finished hardwood cabinets, wine caddy, hot liquid container, catering drawer and miscellaneous general storage.
- ② A 4 place divan effectively possessing the ability to be transformed into a full bed.
- ③ Fully-equipped galley accommodates all of your fine dining needs.
- ④ Gogo Biz domestic high-speed internet and Wi-Fi.
- ⑤ Are we there yet? Get your bearings and keep informed of your flights progress with our in-flight Airshow moving maps.
- ⑥ Cabin accessible luggage department

The extended cabin configuration is equipped with a 12-person executive layout including four camel leather articulating seats, an aft left-hand four place conference group with table, and an aft right-hand 4-place divan.



View more photos at:  
<http://bit.ly/acijetfleet> or Snap:

